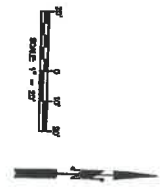
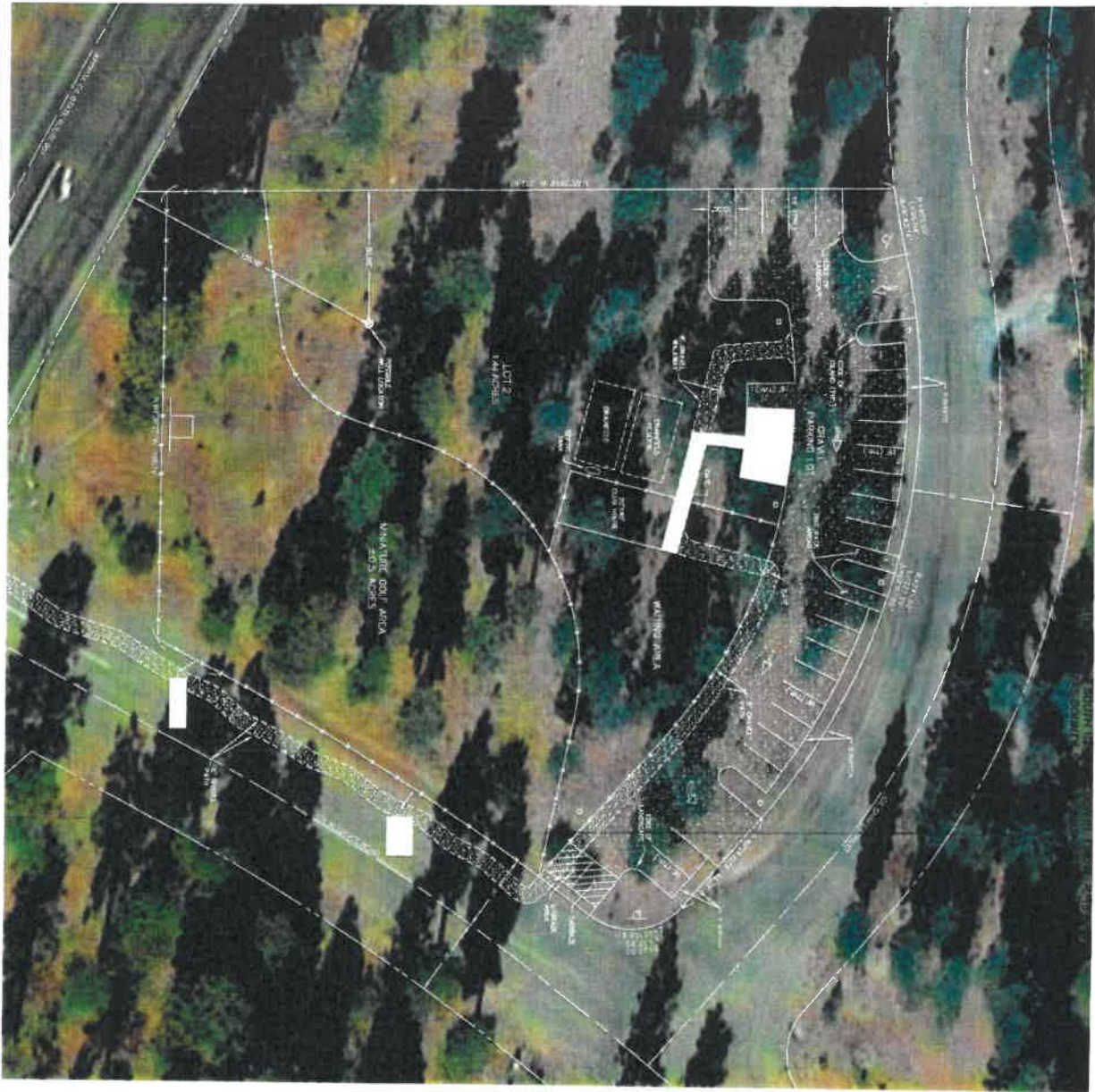
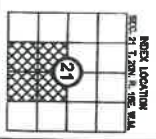
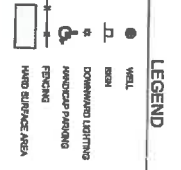


LOT 2, CRYSTAL CREEK DIV. II SHORT PLAT



- NOTES:**
1. SEE PLANNING OF THE SITE PLAN TO DETERMINE ADEQUATE ROAD CORNER CUT OFFS OF SHORT PLATS WHICH ARE 1/2 OF THE PLAT.
 2. FROM ADDITIONAL SITE INFORMATION, SEE THE FOLLOWING:
 - BOUNDARY OF SHORT PLATS, SITES 112 & 113, APPROXIMATELY
 - AND THE BOUNDARY INFORMATION PROVIDED, ALL INFORMATION OF OTHER COUNTY, TOWN OR SUBDIVISION.
 3. WITHIN THE PLAT, CONCEPTUAL PLAN, INFORMATION AT OTHER PLATS, BOUNDARY AND PLATS APPROVED FOR THE PROJECT.
 4. THE SITE PLAN IS FOR INFORMATION.

- REVISIONS:**
- 1. 11/11/11
 - 2. 11/11/11
 - 3. 11/11/11
 - 4. 11/11/11
- LEGAL DESCRIPTION:**
- LOT 2, THE DISTRICT OF THUNDER MOUNTAIN, DIVISION II, SHORT PLAT, AS DESCRIBED IN THE PLAT OF THE DISTRICT OF THUNDER MOUNTAIN, DIVISION II, SHORT PLAT, SITES 112 & 113, APPROVED BY THE BOARD OF SUPERVISORS OF THE COUNTY OF WASHINGTON, WASHINGTON, ON 11/11/11.
- GENERAL INFORMATION:**
- PROJECT NO. 112111



REVISIONS		
DATE	BY	CHK

DRAFT

THUNDER MOUNTAIN, LLC
CONCEPTUAL SITE PLAN

Encompass
 ENGINEERING & SURVEYING

Western Washington Division
 144 NE Jasper Street, Suite 201 • Bellingham, WA 98227 • Phone: (360) 332-0250
 Everett Washington Division
 407 Southcenter Blvd. • Co. Blvd. WA 98021 • Phone: (206) 474-7433

1 of 1